

KostaBoda



**Three
centuries of
bold and
creative
glassmaking
in the forests
of Southern
Sweden.**

Kosta Boda has created glass since 1742

With a focus on modern lifestyle products and inspiring art,

Kosta Boda creates glass that makes a difference.

Sure thing, it's just glass, but at the same time

it's so much more.



At Kosta Boda, we have worked with glass for almost 300 years, during which we've developed a deep understanding and love for the material. We work with design, interior design, lifestyle and art, and strive to create products that are bold and progressive, while still being easily accessible.

We want our collections to be a choice today as well as tomorrow, and we want our assortment of products to add inspiration and beauty in everyday life. We produce well-designed products that fill homes and lives with a foundation to enjoy meals, drinks and socializing, and we contribute to building environments where people want to live and create memories together.

Kosta Boda is not just about what we do, but about who we are. Courage, determination and collaboration have been characteristic for both the company and our staff since the start in 1742. Other qualities that have taken us to where we are today are perseverance, craftsmanship, ingenuity and artistic flair - and all this has made our glass creative, inspiring and bold. Our vision is to be a progressive and curious Swedish brand with integrity that interprets contemporary urban life.

Our passion for what we do is great and spans a variety of areas, divided between Kosta Boda Collection and Kosta Boda Art Glass.

KOSTA BODA COLLECTION

Kosta Boda Collection steers towards lifestyle, with

commercial expressions that capture the spirit of the times. Well-designed and functional products in a well-coordinated assortment with high integrity. Pleasant and easily accessible.

Complementary materials can be used, but always with the main focus set on glass. We look back to move forward, with our starting point in the history of the different glassworks and designers such as Signe Persson-Melin and Erik Höglund, amongst others. To this we add creation in the present and the future. Our collections aim to reflect and promote a modern lifestyle, with a focus on everyday life. When we say everyday, we mean everything from life around the dining table and interior design, to creating memories in everyday festivities. Isn't that some good food for thought? The products draw inspiration from phenomena such as fashion, music and art and can have many different functions depending on the context and company.

KOSTA BODA ART GLASS

With Kosta Boda Art Glass we reach out to the world, at the same time as we bring the world home to Kosta. Our most famous artists participate in the creation, as well as new designers and artists. The collections range from "Artist Collection" - which is art for a wider audience - to completely unique objects and special editions. With the endless possibilities of glass in focus, art is created from a base of creativity, knowledge and courage, in combination with the love for glass as a material.

Viva - *A celebration of everyday life*

The project of making the glassware "Viva" started with a study of contemporary beverage culture, and by combining this with traditions in Swedish glassmaking at a company that has manufactured glass since 1742. On a very personal level, the project also meant rediscovering a region where I lived for a short, but important period during my childhood, when my parents studied at Glasskolan in Orrefors. I was four years old in 1976 but scents, colors and people in the Kingdom of Chrystal have lingered on.

By designer Matti Klenell







“The goal of Viva was to make versatile glassware for everyday festivities”

The goal of Viva was to make versatile glassware for everyday festivities, where we wanted each unit to enable informal use. The unaffected and pleasurable attitude around natural wines was a great source of inspiration when the series developed, but the goal was also to create products that felt obvious to use for all types of drinks. The wide cup is optimized for strong red wines but is also suitable for beer, drinks, juices or water. The narrower model is based on an ISO glass that is used for wine tasting, which makes it optimal for both red and white wine. But the narrow design also makes it perfect for sparkling drinks. The water glass has an informal touch taken from Asian street restaurants where cold beer is often served in small, sympathetic glasses. It has been supplemented with a characteristic jug that completes the Viva family. The glass's function as a lid has resulted in a ribbed, tactile surface.

From the start, we focused on a machine-made product, which increased the challenge in the design process. A large part of the development took place behind computer screens and in front of 3D printers rather than on the factory's hot workshop floor when we optimized the parts' sizes, functions and shapes. At the same time, I wanted the design to reflect the importance of the craft that decides why a glass is designed as it is. The pearl-shaped part where the cup meets the bottom is called a bats or avolio and is a traditional and decorative way of creating a strong attachment between the parts. An addition that gave the glass a more characteristic but also architectural expression.

The result is a progressive but at the same time quite romantic, maybe even sentimental collection, where the feeling of craftsmanship is enhanced despite the fact that they are industrially made objects. It echoes from Simon Gate and Edward Hald, all carefully monitored by Monica Backström's divine spirit.



KostaBoda

Products

Products

Kitchen & tableware



Moss

Åsa Jungnelius

With sustainability in focus! Moss from Kosta Boda is created from reused old molds from Kosta Glasbruk that are carved out by hand to produce new shapes, creating the blown textured surface. The glass gets unique color variations because it is made on circular glass, where crushed glass and spills are used. Small bubbles can also appear in the recycled glass - a perfect base to fill with even more bubbles!



7092208 New

Moss highball recycled
Recycled
H 135 mm W 88 mm
37 cl



7092209 New

Moss tumbler recycled
Recycled
H 84 mm W 85 mm
26 cl



7092211 New

Moss coupe recycled
Recycled
H 115 mm W 114 mm
34 cl



7082200 New

Moss karaff recycled
Recycled
H 285 mm W 115 mm
140 cl







Picnic

Bertil Vallien

Feeling friendly, but rebellious? That's so radical. Just like life when Kosta Boda's Picnic was first launched in 1967. Picnic was launched during a time when people felt contempt towards the bourgeois demand for large sets of tableware. Why have a bunch of different pieces when you can drink straight from the bottle or from simple glasses? And that's when Picnic came to be, in its mouth blown yet simple glory. Back to basics!

With Picnic, there are no limits and it's the inside that counts. The stout stem of the glasses holds liquid all the way to the bottom, which allows the color of the drink to set the tone of the day. Make life colorful! How about some green juice on a Saturday or sparkling rosé on a Tuesday? You know, life's a party - do it your way.



7092100

Picnic small glass
Clear
H 136 mm W 77 mm
32 cl
2-pack



7092101

Picnic large glass
Clear
H 160 mm W 90 mm
48 cl
2-pack



7082100

Picnic carafe with cork lid
Clear
H 265 mm W 108 mm
157 cl







Sugar Dandy

Åsa Jungnelius

Sugar Dandy from Kosta Boda is all about breaking traditional rules and etiquette, in exchange for encouragement to be unique. Dare to be creative and colorful! Be yourself, express yourself and show your individuality - add that personal touch to your home that makes it... you.

This collection consists of oversized coupe glasses with a dash of color that makes it easy to create unique table settings with a dandy feeling. And who said size doesn't matter? No one wants a small glass of champagne! The bigger the glass, the more drink will fit no matter whether it's water or bubbles. It also takes a little concentration to drink then, which gives your drink the attention it deserves. Or why not break the rules completely and serve some dessert from a glass? It's all up to you, sweetie. The collection launched in 2010.



7092005

Sugar Dandy coupe
Green
H 125 mm W 140 mm
32 cl



7092006

Sugar Dandy coupe
Blue
H 125 mm W 140 mm
32 cl



7092007

Sugar Dandy coupe
Pink
H 125 mm W 140 mm
32 cl

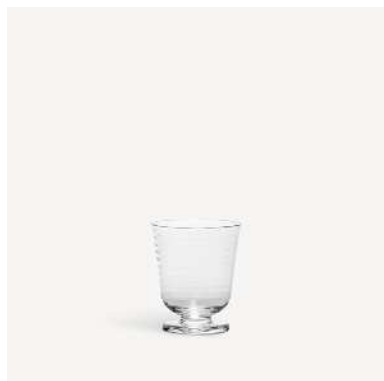


Viva

Matti Klenell

Viva from Kosta Boda brings old traditions into the modern lifestyle. The collection's soft design is inspired by the romantic echo from the glassworks' rich history and the traditions and craftsmanship of glassmaking. It's a love story where opposites attract and together create something new that makes the modern table come alive and bring people together. Life is awesome, and Viva encourages people to be awesome together.

Viva from Kosta Boda consists of glasses in three different sizes and a carafe with a small glass that works both to drink from, as well as a lid to the carafe. The collection launched in 2020.



7092002

Viva glass

Clear

H 90 mm W 76 mm

20 cl

2-pack



7082006

Viva carafe with small glass

Clear

H 230 mm W 102 mm

90 cl



7092004

Viva glass

Clear

H 142 mm W 92 mm

35 cl

2-pack



7092003

Viva glass

Clear

H 165 mm W 73 mm

25 cl

2-pack





Products

Interior design



Crackle

Åsa Jungnelius

Don't be fooled into thinking a cracked glass is something broken - with Crackle it's the whole point! Imperfections create something unique. This collection celebrates cracks, caught in glass like a moment frozen in time.

Crackle from Kosta Boda, launched in 2020, is a collection of vases and a bowl, mouth blown in Kosta and created from the elements of nature. The shape is carved in clay by hand, and the crackled surface is formed with an old technique where the hot glass is placed in cold water. The result is sculptural pieces reminiscent of frozen ice, also available in a pale pink version. The crackled surface will catch the light from the crack of dawn until sunset, telling the story of fire, earth and water - and stories make life interesting and fun. So what's your story? Don't let it fall between the cracks.



7052101

Crackle bowl

Pink

H 105 mm W 250 mm



7042116

Crackle vase

Pink

H 175 mm W 220 mm



7042113

Crackle vase

Pink

H 270 mm W 205 mm







Gabba Gabba Hey

Ludvig Löfgren

Hey! There's no place like home, and there's no one like you. Home is where the heart is, so fill it with things you love. Like friends and personal stuff. Or something that's both at the same time, like a friendly sculpture.

My Wide Life (Gabba Gabba Hey) from Kosta Boda is mouth-blown in Kosta. It's a symbol of our wide lives and how we live as modern people. Life can just like glass be seductive, beautiful, soft and compliant. It can be hot, intense and challenging. It's wild. And of all the above, so is this collection. My Wide Life (Gabba Gabba Hey) launched in 2010.



7091020

My Wide Life Gabba Gabba Hey

Black

H 305 mm W 205 mm







Kappa

Mimmi Blomqvist

Kappa is a collection of vases that are produced with excess glass from Kosta glassworks. During the process of transforming recycled glass into something new, small bubbles emerge and variations in color are created. Therefore, the finished vases differ in shades from blue to gray, which in combination with the small bubbles makes each vase unique.

The collection is mouth blown in a mold and named after the small bubble - or cap - that rises over the edge in this process. It's also the cap that's been the inspiration behind the shape of the vases - a shape that makes them beautiful, wonderful and inviting. Kosta Boda's Kappa is designed for a sustainable future, and is at the same time a tribute to the craft history of glass. Isn't that enough to make one feel all bubbly inside? The collection launched in 2021.



7042223 New

Kappa vase

Clear

H 160 mm W 200 mm



7042204 New

Kappa vase

Clear

H 225 mm W 300 mm







Meadow

Sara Persson

What would the world be without flower meadows? And what would a home be without beautiful vases that can embrace a piece of nature? Tulips, roses, a small shy bouquet or a large wild flower arrangement - with Meadow there is a vase for every bouquet. And don't worry; if you don't like flowers (or they don't like you) Meadow is just as beautiful on its own. An ornament worthy of its own place in the heart of every home. Meadow is created with nature as inspiration. While still warm, the vases are rolled in small pieces of colored, crushed glass. The glass pieces melt into the vase and become a part of the glass itself, and each vase becomes unique. The combination of the straight shapes and the organic pattern creates a playfulness that highlights the craftsmanship, just as the shape of the vases themselves embrace and highlight the plants they hold.



7042207 New
Meadow vase
Winter
H 115 mm W 114 mm



7042208 New
Meadow vase
Winter
H 200 mm W 205 mm



7042209 New
Meadow vase
Winter
H 300 mm W 125 mm



7042225 New
Meadow vase
Spring
H 115 mm W 114 mm



7042226 New
Meadow vase
Spring
H 200 mm W 205 mm



7042227 New
Meadow vase
Spring
H 300 mm W 125 mm







Polar

Göran Wärff

Nature, light and ice can be really fascinating. It was out of the love for these elements Polar was born. The collection consists of several glass sculptures reminiscent of rippling water during a moment frozen in time. Doubling as candle holders, the depths of the clear glass becomes a carrier of light, which allows the sculpture and the play of light to create a work of art that feels alive. Polar from Kosta Boda invites to combine several pieces of different sizes to create a playful group, as well as keeping a single piece as an exclusive design object in an art-loving home. Or as a unique gift, from Sweden to the Sydney Opera house for example (true story).



7062110
Polar votive
White
H 190 mm W 160 mm



7062111
Polar votive
White
H 200 mm W 200 mm



7062112
Polar votive
White
H 330 mm W 280 mm



7062114
Polar votive
Black
H 190 mm W 160 mm



7062113
Polar votive
Black
H 200 mm W 200 mm



7062006
Polar votive
Black
H 330 mm W 330 mm

APPENDIX

Kosta Boda has created glass since 1742	5
---	---

Viva - A celebration of everyday life	8
---------------------------------------	---

Kitchen & tableware

Moss	17
------	----

Picnic	21
--------	----

Sugar Dandy	25
-------------	----

Viva	27
------	----

Interior design

Crackle	33
---------	----

Gabba Gabba Hey	37
-----------------	----

Kappa	41
-------	----

Meadow	45
--------	----

Polar	49
-------	----

**Discover more about us,
our products and our history
on kostaboda.com**

Orrefors Kosta Boda AB
Stora vägen 96, SE-365 43 Kosta, Sweden
Tel: +46 478 345 50
order@kostaboda.se
www.kostaboda.se

Art nr 7010022



KostaBoda



Catalog Spring/Summer 2023

**Three
centuries of
bold and
creative
glassmaking
in the forests
of Southern
Sweden.**

Kosta Boda has created glass since 1742

With a focus on modern lifestyle products and inspiring art,

Kosta Boda creates glass that makes a difference.

Sure thing, it's just glass, but at the same time

it's so much more.



At Kosta Boda, we have worked with glass for almost 300 years, during which we've developed a deep understanding and love for the material. We work with design, interior design, lifestyle and art, and strive to create products that are bold and progressive, while still being easily accessible.

We want our collections to be a choice today as well as tomorrow, and we want our assortment of products to add inspiration and beauty in everyday life. We produce well-designed products that fill homes and lives with a foundation to enjoy meals, drinks and socializing, and we contribute to building environments where people want to live and create memories together.

Kosta Boda is not just about what we do, but about who we are. Courage, determination and collaboration have been characteristic for both the company and our staff since the start in 1742. Other qualities that have taken us to where we are today are perseverance, craftsmanship, ingenuity and artistic flair - and all this has made our glass creative, inspiring and bold. Our vision is to be a progressive and curious Swedish brand with integrity that interprets contemporary urban life.

Our passion for what we do is great and spans a variety of areas, divided between Kosta Boda Collection and Kosta Boda Art Glass.

KOSTA BODA COLLECTION

Kosta Boda Collection steers towards lifestyle, with

commercial expressions that capture the spirit of the times. Well-designed and functional products in a well-coordinated assortment with high integrity. Pleasant and easily accessible.

Complementary materials can be used, but always with the main focus set on glass. We look back to move forward, with our starting point in the history of the different glassworks and designers such as Signe Persson-Melin and Erik Höglund, amongst others. To this we add creation in the present and the future. Our collections aim to reflect and promote a modern lifestyle, with a focus on everyday life. When we say everyday, we mean everything from life around the dining table and interior design, to creating memories in everyday festivities. Isn't that some good food for thought? The products draw inspiration from phenomena such as fashion, music and art and can have many different functions depending on the context and company.

KOSTA BODA ART GLASS

With Kosta Boda Art Glass we reach out to the world, at the same time as we bring the world home to Kosta. Our most famous artists participate in the creation, as well as new designers and artists. The collections range from "Artist Collection" - which is art for a wider audience - to completely unique objects and special editions. With the endless possibilities of glass in focus, art is created from a base of creativity, knowledge and courage, in combination with the love for glass as a material.

Sara Woodrow – *a design portrait*

Sara Woodrow is a designer, artist and illustrator. She's a contemporary designer who dares to go her own way, and she enjoys working with different techniques. To her, it's always been important that her art conveys an emotion or a story.



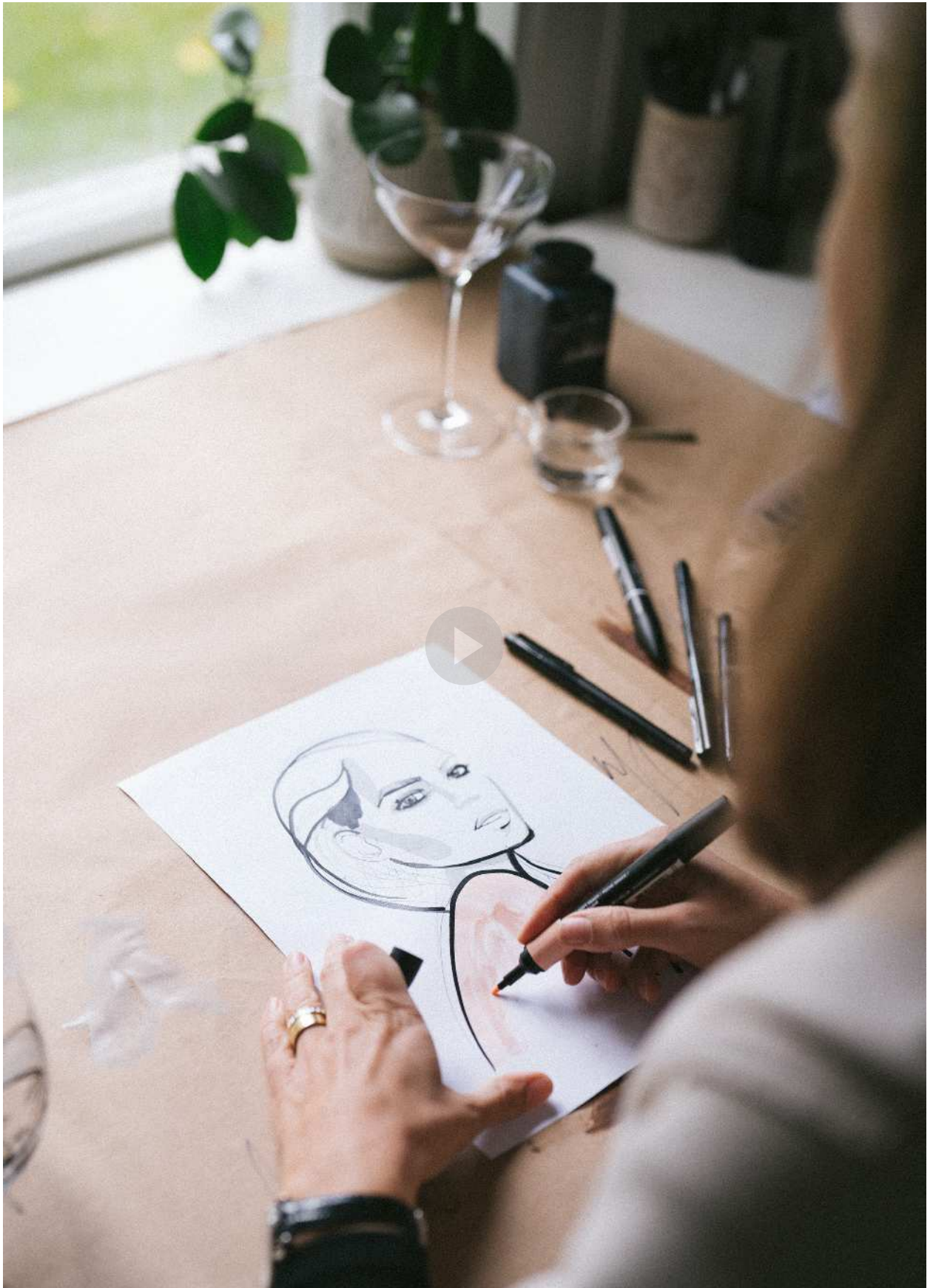




“I find inspiration in everything that’s beautiful around me. It can really differ from day to day. But the most important to me is my belief, my hope and my love. These are the fundamental sources of inspiration in everything I do.”

Sara has, amongst other things, made illustrations for one of the world’s leading fashion houses in haute couture, Dior, where she illustrated portraits of about 30 guests during the Dior Cruise 2020 fashion show in Marrakech. For Kosta Boda she has illustrated motifs for several different glasses - such as wine glasses and champagne glasses - and a couple of carafes in the collection All About You. Her work is characterized by a strong sense of trends and presence in time, so it’s not strange that she’s become a familiar name amongst young design lovers.

For Kosta Boda, Sara has made illustrations for the much-appreciated collection All About You. The illustrations are about love, longing and passion. It’s about the amazing moments when two long to be one. This is a collection of strong emotions captured in a clean design with illustrations influenced by fashion. All About You from Kosta Boda consists of tumbler glasses, beer glasses, champagne glasses, carafes and wine glasses. The collection was first launched in 2015 and will be complemented with six new designs in spring 2023.



KostaBoda

Products

Products

Kitchen & tableware



All About You

Sara Woodrow

Who do you love? Who do you miss? Who do you want?

All About You from Kosta Boda is about love, longing and passion. It's about the amazing moments when two long to be one. This is a collection of strong emotions captured in a clean design with illustrations influenced by fashion. What and how do you want to feel? It's your choice. You're the main character of your life, and it's up to you to write your story.

Take it on in style.

All About You from Kosta Boda consists of tumbler glasses, beer glasses, champagne glasses, carafes and wine



7092330 New

Next To Her tumbler

Clear

H 123 mm W 90 mm

57 cl

2-pack



7092331 New

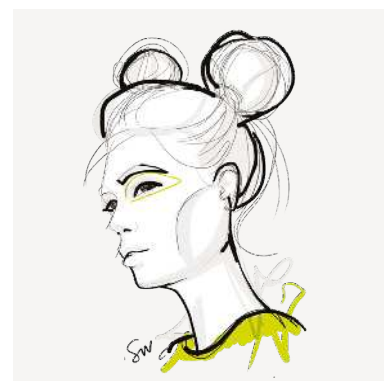
Hold You wine glass

Clear

H 240 mm W 90 mm

52 cl

2-pack



7092332 New

Cheers To You beer glass

Clear

H 180 mm W 82 mm

40 cl

2-pack



7092333 New

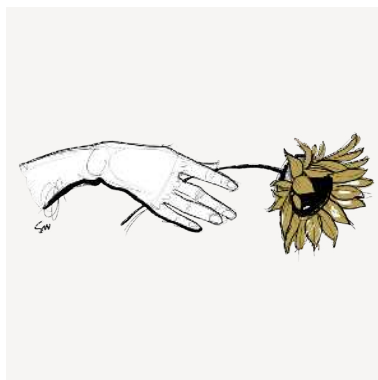
Let's Celebrate You champagne glass

Clear

H 247 mm W 55 mm

23 cl

2-pack



7092334 New

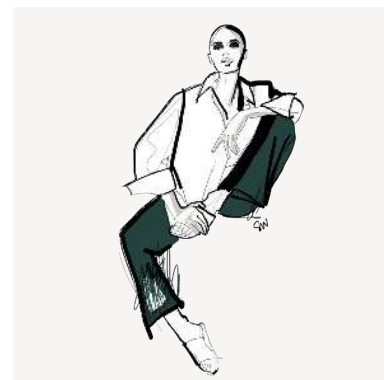
All For You coupe

Clear

H 185 mm W 113 mm

24 cl

2-pack



7082300 New

Time For You carafe

Clear

H 280 mm W 105 mm

100 cl

All About You

Sara Woodrow



7091532

Love You tumbler

Clear/pink

H 123 mm W 90 mm

57 cl

2-pack



7091530

Miss You tumbler

Clear/blue

H 123 mm W 90 mm

57 cl

2-pack



7091531

Want You tumbler

Clear/red

H 123 mm W 90 mm

57 cl

2-pack



7091838

Wait For Him wine glass

Clear/brown

H 240 mm W 90 mm

52 cl

2-pack



7091701

With You wine glass

Clear/dark purple

H 240 mm W 90 mm

52 cl

2-pack



7091739

Miss Him wine glass

Clear/blue

H 240 mm W 90 mm

52 cl

2-pack



7091738

Love Him tumbler
Clear/black
H 123 mm W 90 mm
57 cl
2-pack



7091700

Need You tumbler
Clear/grey
H 123 mm W 90 mm
57 cl
2-pack



7091839

Wait For Her wine glass
Clear/Dusty Pink
H 240 mm W 90 mm
52 cl
2-pack



7091740

Want Him beer glass
Clear/green
H 180 mm W 82 mm
40 cl
2-pack



7091840

Near You beer glass
Clear/Coral
H 180 mm W 82 mm
40 cl
2-pack

All About You

Sara Woodrow



7092000

Forever Yours champagne glass

Clear/Dusty Pink

H 247 mm W 75 mm

23 cl

2-pack



7092001

Forever Mine champagne glass

Clear/purple

H 247 mm W 55 mm

23 cl

2-pack



7092102

You And Me Together coupe

Clear

H 185 mm W 113 mm

32 cl

2-pack



7082003

Him carafe

Clear/grey

H 280 mm W 105 mm

100 cl



7081700

Her carafe

Clear/purple

H 280 mm W 105 mm

100 cl





Château

Bertil Vallien

This collection was first designed in 1981, and has since sold over one million copies. This has made it one of the bestselling handmade stemware collections worldwide - clearly chosen by the people. Now, it takes a good team to come to rule the world like this. Kosta Boda's Château is handmade with extensive knowledge and vast experience. The result is a unique and qualified craft, characterised by a twisted dome which captures and reflects the light. Simple yet elegant, this has become an icon fit for royalty.

In 2021 Château celebrates 40 years with a special anniversary collection, with selected glasses available in the new color multi. This colorful edition changes appearance depending on the source of light, ranging from blue to violet with hints of other tones. The anniversary collection is only available during 2021.



7021224

Château liqueur glass

Clear

H 125 mm W 70 mm

8 cl



7021225

Château aquavit glass

Clear

H 145 mm W 57 mm

6 cl



7021221

Château champagne glass

Clear

H 225 mm W 60 mm

21 cl



7021232

Château cognac glass

Clear

H 135 mm W 62 mm

36 cl



7021235

Château coupe

Clear

H 163 mm W 98 mm

35 cl



7021262

Château carafe

Clear

H 273 mm W 114 mm

116 cl

Château

Bertil Vallien



7021211

Château beer glass
Clear
H 185 mm W 80 mm
63 cl



7021212

Château beer glass
Clear
H 205 mm W 60 mm
41 cl



7021291

Château tumbler
Clear
H 90 mm W 73 mm
27 cl



7021205

Château wine glass
Clear
H 175 mm W 75 mm
20 cl



7021206

Château wine glass
Clear
H 190 mm W 85 mm
30 cl



7021207

Château wine glass
Clear
H 200 mm W 90 mm
35 cl



7021293

Château tumbler
Clear
H 160 mm W 65 mm
38 cl



7021251

Château tumbler
Clear
H 105 mm W 65 mm
22 cl



7021213

Château wine glass XL
Clear
H 215 mm W 68 mm
35 cl



7021214

Château wine glass XL
Clear
H 245 mm W 78 mm
61 cl





Friendship

Ulrica Hydman Vallien

Friendship can be a lot, but most of all it's amazing and important. The glasses of this collection are filled to the brim with motifs of love and friendship, and what more can one possibly need? During tough times and hardships we can count on friends to lift our spirits, and at other times we can count them in for good times - all the time. With Friendship, there are no half empty glasses around! So let's raise our glasses, clench our thirst and fuel our spirits. Cheers to Friendship!

Friendship from Kosta Boda, launched in 2011, consists of beer glasses and wine glasses with different motifs.



7090686

Friendship You And Me beer glass

Clear

H 215 mm W 73 mm

50 cl



7090687

Friendship Happiness beer glass

Clear

H 215 mm W 73 mm

50 cl



7091116

Friendship Stay Wise beer glass

Clear

H 215 mm W 73 mm

50 cl



7091528

Friendship You & Me wine glass

Clear

H 215 mm W 90 mm

50 cl



7091526

Friendship Happiness wine glass

Clear

H 215 mm W 90 mm

50 cl



7091525

Friendship Stay Wise wine glass

Clear

H 215 mm W 90 mm

50 cl



7091125

Friendship Hearts beer glass

Clear

H 215 mm W 73 mm

50 cl



7091527

Friendship Hearts wine glass

Clear

H 215 mm W 90 mm

50 cl



Limelight

Göran Wärff

Limelight is a classic collection in several colors that's been highlighting everyday festivities since the 80s. The vases in the collection are created with a broad rim that not just supports, but enhances, any bouquet they carry - everything from slender roses to wild tulips stand firmly planted in everyday life with Limelight by their side. There won't be any wallflowers here - you see, isn't limelight best when shared with friends after all?

The glasses, plates and the other parts of the collection invite you to create nice table settings every day of the week, and make life swimmingly easy because everything is machine washable. The collection is characterized by the steady, decorated base of the glass reflecting light.



7051700

Limelight coupe

Clear

H 105 mm W 120 mm

35 cl



7091720

Limelight wine glass

Clear

H 137 mm W 84 mm

25 cl

2-pack



7092020

Limelight wine glass XL

Clear

H 157 mm W 91 mm

35 cl

2-pack



Limelight

Göran Wärff



7091721

Limelight tumbler

Clear

H 95 mm W 70 mm

22 cl

2-pack



7081720

Limelight jug

Clear

H 240 mm W 127 mm

170 cl



Line

Anna Ehrner

Is there really a fine line between festivities and everyday life? Why not cross the line and make everyday a day worth celebrating? This timeless collection from Kosta Boda is mouth blown in Kosta in Sweden, and is just as elegant today as when it first saw the light of day 1982. The thin glass thread encircling the glasses goes in line with high quality Swedish craftsmanship, and is added by hand to every glass.

Line from Kosta Boda consists of a carafe and different glasses: wine, tumbler, martini, gin tonic, cognac, champagne, beer and aquavit.



7021513

Line wine glass
Clear
H 230 mm W 83 mm
44 cl



7021514

Line wine glass XL
Clear
H 255 mm W 93 mm
67 cl



7021507

Line wine glass
Clear
H 230 mm W 80 mm
35 cl



7021506

Line wine glass
Clear
H 220 mm W 73 mm
28 cl



7021521

Line champagne glass
Clear
H 240 mm W 55 mm
15 cl



7021525

Line snaps glass
Clear
H 155 mm W 55 mm
7 cl

Line

Anna Ehrner



7021553
Line tumbler
Clear
H 105 mm W 70 mm
31 cl



7021596
Line Gin & Tonic
Clear
H 125 mm W 90 mm
60 cl



7021595
Line tumbler
Clear
H 150 mm W 75 mm
30 cl



7021531
Line cognac glass
Clear
H 115 mm W 60 mm
26 cl



7021533
Line martini glass
Clear
H 165 mm W 115 mm
23 cl



7021512
Line beer glass
Clear
H 190 mm W 50 mm
50 cl



7021562

Line carafe

Clear

H 270 mm W 105 mm

98 cl



Mine

Ulrica Hydman-Vallien

What's your favorite part of your home? Mine is a collection consisting of beautiful pieces that are just as festive during special occasions as everyday life. And that's what it's all about, isn't it? Let your home be a place to enjoy, every day.

Mine is created with centrifugation; a technique invented in Småland in Sweden during the early 50's. When adding color in the process it creates an impression of swirling veils of fog inside the glass, making each piece unique. And with that, it's time to set the table, gather your favorite people and celebrate! Weekdays and weekends, it's always time to enjoy life with food, drinks and good company.

Mine from Kosta Boda, launched in 2002, consists of bowls, side plates, tumbler glasses and a vase.



7070417

Mine side plate
Black
B 200 mm



7050425

Mine bowl
Black
H 70 mm W 135 mm



7090224

Mine tumbler
Black
H 115 mm W 95 mm
30 cl



7070415

Mine side plate
White
B 200 mm



7050330

Mine bowl
White
H 70 mm W 135 mm



7090320

Mine tumbler
White
H 115 mm W 95 mm
30 cl



New Friends

Ernst Billgren

A bear, a deer, a duck and a fox went to the pub to get a drink. A frog walks in and asks for a kiss. What do you do?
Answer: You grab a drink with them of course, a stranger is just a new friend you haven't met yet.

Stay a child at heart and become one with nature - now made easier than ever with Kosta Boda's New Friends collection, launched in 2008. With a twinkle in the eye an animal is to be found in every piece of the collection, which is brought to life by Kosta Boda's skilled glassworkers. Resting at the bottom of your drink the animals watch you without a care in the world - they're just happy to share this drink with you. After all, getting to know someone over a drink is a great way to make a New Friend.



7090950

New Friends tumbler fox
Clear
H 96 mm W 86 mm
46 cl



7091950

New Friends tumbler frog
Clear
H 96 mm W mm
46 cl



7090853

New Friends tumbler bear
Clear
H 96 mm W 86 mm
46 cl



7091951

New Friends tumbler bird
Clear
H 96 mm W mm
46 cl



7091952

New Friends tumbler arctic fox
Clear
H 96 mm W mm
46 cl



7090953

New Friends tumbler duck
Clear
H 96 mm W 86 mm
46 cl



Salong Betong

X KostaBoda

Rather infamous than unknown, and the notorious Salong Betong are known for both their tattoos and everything else they do. They create space and possibilities for creativity, and now they've taken their creativity to Kosta Boda. From the collaboration a collection of bar glasses was born, with Kosta Boda's logo printed on the glass. The collection may be small, but it's quality over quantity, and with an array of variations of the graphic print there's at least one glass for every drink. Cheers!



7092105 New
Salong Betong Old Fashioned
Clear
H 88 mm W 74 mm
28 cl
2-pack



7092106 New
Salong Betong Highball
Clear
H 148 mm W 61 mm
33 cl
2-pack



7092108 New
Salong Betong Shot
Clear
H 62 mm W 43 mm
6 cl
2-pack



7092107 New
Salong Betong Double Old Fashioned
Clear
H 97 mm W 82 mm
35 cl
2-pack





Products

Interior design

Brick

Anna Ehrner

Light and warmth are building blocks for a cozy home. Sturdy as a Brick, one can count on these tealight holders to light up any home. Both shape and name are inspired by something so simple - yet so important - as bricks. With the difference in color for every piece, each tealight holder becomes a unique object that helps to build a steady foundation for a cozy home.

Brick from Kosta Boda, launched in 2010, consists of candle holders in different colors.



7061030
Brick votive
Black
H 75 mm W 85 mm



7061031
Brick votive
White
H 75 mm W 85 mm



7061032
Brick votive
Blue
H 75 mm W 85 mm

Brük

Anna Ehrner

In Swedish, “bruk” can mean both the use of something, the custom of traditions, plaster, and glassworks. All of that goes in line with the collection Brük. It’s the colorful plaster that binds everything together in a home, so let’s light it up and use it as much as possible. Let’s gather around the light and celebrate customs and traditions in the warmth of our homes. How brilliant does that sound?

Brük from Kosta Boda, launched in 2016, consists of candle holders in a variety of different colors.



7061602

Brük votive

Blue

H 60 mm W 72 mm



7061606

Brük votive

Yellow

H 60 mm W 72 mm



7061600

Brük votive

Clear

H 60 mm W 72 mm



7061609

Brük votive

Dark brown

H 60 mm W 72 mm



7061603

Brük votive

Green

H 60 mm W 72 mm



Brük

Anna Ehrner



7061604

Brük votive

Purple

H 60 mm W 72 mm



7061607

Brük votive

Orange

H 60 mm W 72 mm



7061608

Brük votive

Turquoise

H 60 mm W 72 mm



7061605

Brük votive

Pink

H 60 mm W 72 mm



Caramba

Ulrica Hydman-Vallien

The name of this collection, launched in 1986, from Kosta Boda is a souvenir from a trip to Mexico, where the word caramba is a powerful word indicating admiration, surprise or anger. Here, it's something that contributes to the impact of the hand-painted black paintwork of this mouth-blown collection. Now, do you dare to be expressive and make your home come alive? What is Caramba to you? It's up to you to decide - is it a piece of art, a bowl or a vase? What do you feel, and what's the story you want to tell with the details of your home?



7078733

Caramba dish

White

H 90 mm W 265 mm



7048735

Caramba vase

White

H 340 mm W 235 mm



Contrast

Anna Ehrner

Life is not all the same. On the contrary, it's full of ups and downs. Go with the flow and enjoy the ride, because in the end it's in those contrasts we find life itself. Of course, sometimes the road ahead is a bit foggy - just as we literally can describe this collection, with its veils of smoke inside the glass. You just gotta trust the process. The manufacturing process of Contrast includes centrifugation; a technique invented in Småland during the 50's. When color is added it creates unique veils and patterns in the glass. The motion helps to create beautiful bowls, dishes and vases - just as the motion of life shapes us all into beings full of contrasts too.

Contrast from Kosta Boda, launched in 2005, consists of different sized bowls, dishes and vases - all in several different colors.



7072200 New
Contrast dish
White/White
H 62 mm W 380 mm



7052206 New
Contrast bowl
White/White
H 350 mm W 170 mm



7052208 New
Contrast bowl
White/White
H 160 mm W 85 mm



7052207 New
Contrast bowl
White/White
H 230 mm W 125 mm

Contrast

Anna Ehrner



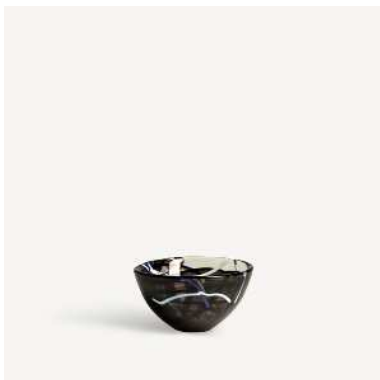
7050512
Contrast bowl
Blue
H 85 mm W 160 mm



7050612
Contrast bowl
Blue
H 125 mm W 230 mm



7050451
Contrast bowl
Blue
H 170 mm W 350 mm



7050510
Contrast bowl
Black
H 85 mm W 160 mm



7050610
Contrast bowl
Black
H 125 mm W 230 mm



7050452
Contrast bowl
Black
H 170 mm W 350 mm



7070611

Contrast dish

Blue

H 62 mm W 380 mm



7070612

Contrast dish

Black

H 62 mm W 380 mm







Crackle

Åsa Jungnelius

Don't be fooled into thinking a cracked glass is something broken - with Crackle it's the whole point! Imperfections create something unique. This collection celebrates cracks, caught in glass like a moment frozen in time.

Crackle from Kosta Boda, launched in 2020, is a collection of vases and a bowl, mouth blown in Kosta and created from the elements of nature. The shape is carved in clay by hand, and the crackled surface is formed with an old technique where the hot glass is placed in cold water. The result is sculptural pieces reminiscent of frozen ice, also available in a pale pink version. The crackled surface will catch the light from the crack of dawn until sunset, telling the story of fire, earth and water - and stories make life interesting and fun. So what's your story? Don't let it fall between the cracks.



7052007
Crackle bowl
Clear
H 105 mm W 250 mm



7052008
Crackle vase
Clear
H 175 mm W 220 mm



7042008
Crackle vase
Clear
H 270 mm W 205 mm



Kappa

Mimmi Blomqvist

Kappa is a collection of vases that are produced with excess glass from Kosta glassworks. During the process of transforming recycled glass into something new, small bubbles emerge and variations in color are created. Therefore, the finished vases differ in shades from blue to gray, which in combination with the small bubbles makes each vase unique.

The collection is mouth blown in a mold and named after the small bubble - or cap - that rises over the edge in this process. It's also the cap that's been the inspiration behind the shape of the vases - a shape that makes them beautiful, wonderful and inviting. Kosta Boda's Kappa is designed for a sustainable future, and is at the same time a tribute to the craft history of glass. Isn't that enough to make one feel all bubbly inside? The collection launched in 2021.



7042104

Kappa vase recycled glass
Blue/Grey
H 160 mm W 200 mm



7042105

Kappa vase recycled glass
Blue/Grey
H 210 mm W 260 mm







Limelight

Göran Wärff

Limelight is a classic collection in several colors that's been highlighting everyday festivities since the 80s. The vases in the collection are created with a broad rim that not just supports, but enhances, any bouquet they carry - everything from slender roses to wild tulips stand firmly planted in everyday life with Limelight by their side. There won't be any wallflowers here - you see, isn't limelight best when shared with friends after all?

The glasses, plates and the other parts of the collection invite you to create nice table settings every day of the week, and make life swimmingly easy because everything is machine washable. The collection is characterized by the steady, decorated base of the glass reflecting light.



7042002

Limelight tulip vase
Green
H 195 mm W 182 mm



7041701

Limelight tulip vase
Clear
H 195 mm W 182 mm



7042115

Limelight tulip vase
Amber
H 195 mm W 182 mm



7042003

Limelight rose vase
Green
H 230 mm W 155 mm



7041700

Limelight rose vase
Clear
H 230 mm W 155 mm



7042114

Limelight rose vase
Amber
H 230 mm W 155 mm



Limelight

Göran Wärff



7052000
Limelight bowl
Clear
H 110 mm W 245 mm



7052001
Limelight bowl
Smokey grey
H 110 mm W 245 mm



7041718
Limelight tulip vase
Smokey grey
H 195 mm W 182 mm



7072000
Limelight dish
Clear
H 80 mm W 330 mm



7072001
Limelight dish
Smokey grey
H 80 mm W 330 mm



7041717
Limelight ros vase
Smokey grey
H 230 mm W 155 mm







Make Up

Åsa Jungnelius

Make Up from Kosta Boda is a collection of iconic beauty products created as a miniature version of Åsa Jungnelius' art installation "I like your hairstyle!" These pressed glass products make a feminist statement, as does much of Jungnelius' artwork. The collection launched in 2008.



7092205 New
Make Up lipstick Mini
Red
H 133 mm W 42 mm



7092206 New
Make Up lipstick Mini
Pink
H 133 mm W 42 mm



7092212 New
Make Up lipstick Mini
Beige
H 133 mm W 42 mm



7092213 New
Make Up nailpolish Mini
Red
H 124 mm W 49 mm



7092214 New
Make Up nailpolish Mini
Pink
H 124 mm W 49 mm



7092215 New
Make Up nailpolish Mini
Beige
H 124 mm W 49 mm





Mine

Ulrica Hydman-Vallien

What's your favorite part of your home? Mine is a collection consisting of beautiful pieces that are just as festive during special occasions as everyday life. And that's what it's all about, isn't it? Let your home be a place to enjoy, every day.

Mine is created with centrifugation; a technique invented in Småland in Sweden during the early 50's. When adding color in the process it creates an impression of swirling veils of fog inside the glass, making each piece unique. And with that, it's time to set the table, gather your favorite people and celebrate! Weekdays and weekends, it's always time to enjoy life with food, drinks and good company.

Mine from Kosta Boda, launched in 2002, consists of bowls, side plates, tumbler glasses and a vase.



7050717

Mine bowl

Black

H 90 mm W 250 mm



7050635

Mine bowl

White

H 90 mm W 250 mm



7040650

Mine vase

White

H 190 mm W 130 mm

Open Minds

Ulrica Hydman-Vallien

If you open your mind, what do you see? Does this collection consist of functional pieces that can carry flowers and fruit, are they just made as interior objects, or is it perhaps something in between? Let's face it - we don't need to see eye to eye. Different points of view can be a good thing!

Open Minds is mouth-blown and hand-painted with dramatic brush strokes, creating a collection that's always ready to face the world with a smile. It has become a true classic, and if you don't mind, a little brag is in place: pieces from this collection has made several appearances on popular TV shows, such as Friends and Sex and the City.

Kosta Boda's collection from 1986 consists of a dish and several different vases.



7040622

Open Minds vase

White

H 360 mm W 180 mm



7041020

Open Minds vase

White

H 250 mm W 150 mm



Pagod

Anne Nilsson

In appreciation of great design in combination with functionality, Pagod from Kosta Boda is a collection of stylish vases reminiscent of the 60's. Designed to give cut flowers a beautiful expression, the mouth-blown vases have a clear function. The collection is made with an underlay technique with several layers of glass, providing a well-worked and elegant result. A layer of clear glass lies like a casing over an inner colored layer, letting its true color shine through. Being beautiful from the inside out, literally, this is a temple for flowers, praising them to the skies. The collection launched in 2018.



7042206 New

Pagod vase

Clear

H 255 mm W 135 mm



7042205 New

Pagod vase

Clear

H 167 mm W 150 mm



7042201 New

Pagod vase

Red

H 255 mm W 135 mm



7042202 New

Pagod vase

Red

H 167 mm W 150 mm







Polar

Göran Wärff

Nature, light and ice can be really fascinating. It was out of the love for these elements Polar was born. The collection consists of several glass sculptures reminiscent of rippling water during a moment frozen in time. Doubling as candle holders, the depths of the clear glass becomes a carrier of light, which allows the sculpture and the play of light to create a work of art that feels alive. Polar from Kosta Boda invites to combine several pieces of different sizes to create a playful group, as well as keeping a single piece as an exclusive design object in an art-loving home. Or as a unique gift, from Sweden to the Sydney Opera house for example (true story).

Polar from Kosta Boda consists of candle holders in several different sizes and colors. The collection was first launched in 1974.



7062108

Polar votive

Clear

H 86 mm W 95 mm

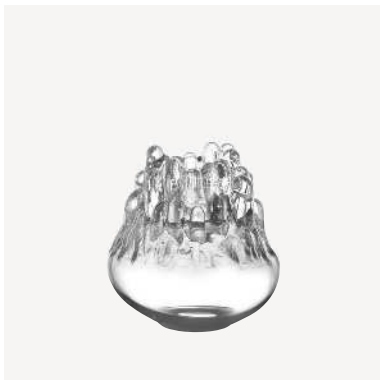


7062109

Polar votive

Clear

H 112 mm W 108 mm



7062007

Polar votive

Clear

H 190 mm W 160 mm



7062008

Polar votive

Clear

H 200 mm W 200 mm



7062005

Polar votive

Clear

H 330 mm W 280 mm





Snowball

Ann Wolff

Snowball from Kosta Boda is made to light up your days and nights. Literally. After all, it's a tealight holder. However, this is not just any tealight holder - this is an iconic product that's been around since 1973, when it was created in an experiment to blow glass directly in a snowdrift. Ever since, it has sold over 15 million copies all over the world.

With the shape and a surface as if actually made of snow, it easily evokes memories of winter where snow lanterns light up the darkness. Let it light up your life and create a cozy atmosphere. It's so effective, so why wait? Let's get the ball rolling - light a candle and trust the Snowball effect.

PS. Don't throw a snowball fight with this, it's made of glass. It's all part of the game, but that's kinda crossing a line, don't you think?

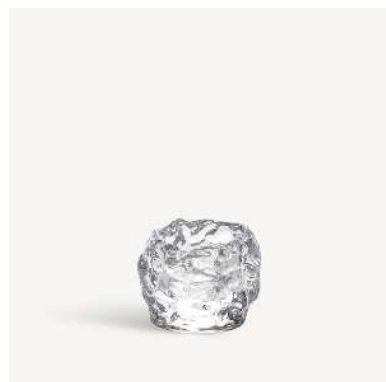


7067354

Snowball votive

Clear

3-pack



7067800

Snowball votive

Clear

H 60 mm W 66 mm



7067350

Snowball votive

Clear

H 70 mm W 80 mm



7067353

Snowball votive

Clear

H 90 mm W 105 mm

Still Life

Ludvig Löfgren

Oh dear, do not let the sight of this make you light headed! This is just a tealight holder in touch with Shakespeare's Hamlet. Let it be thy soft headlight in the night when stillness falls upon you! Still Life from Kosta Boda is also the perfect company to lighten up late night conversations between bright-headed friends. Basically, it's the perfect detail to make your home come alive. Still Life launched in 2008.



7060820

Still Life votive

Clear

H 85 mm W 115 mm



7061521

Still Life votive

Silver

H 85 mm W 115 mm





APPENDIX

Kosta Boda has created glass since 1742 5

Viva - A celebration of everyday life 8

Kitchen & tableware

All About You 17

Chateau 23

Friendship 28

Limelight 31

Line 35

Mine 39

New Friends 41

Salong Betong 43

Interior design

Brick 48

Bruk 49

Caramba 53

Contrast 55

Crackle 61

Kappa 63

Limelight 67

Make Up 73

Mine 76

Open Minds 77

Pagod 79

Polar 83

Snowball 86

Still Life 87

**Discover more about us,
our products and our history
on kostaboda.com**

Orrefors Kosta Boda AB
Stora vägen 96, SE-365 43 Kosta, Sweden
Tel: +46 478 345 50
order@kostaboda.se
www.kostaboda.se

Art nr 7010023

